



SAMPSON COUNTY 911 & ES FACILITIES

CLINTON,
NORTH CAROLINA

CONSTRUCTION
DOCUMENTS

WALL SECTIONS

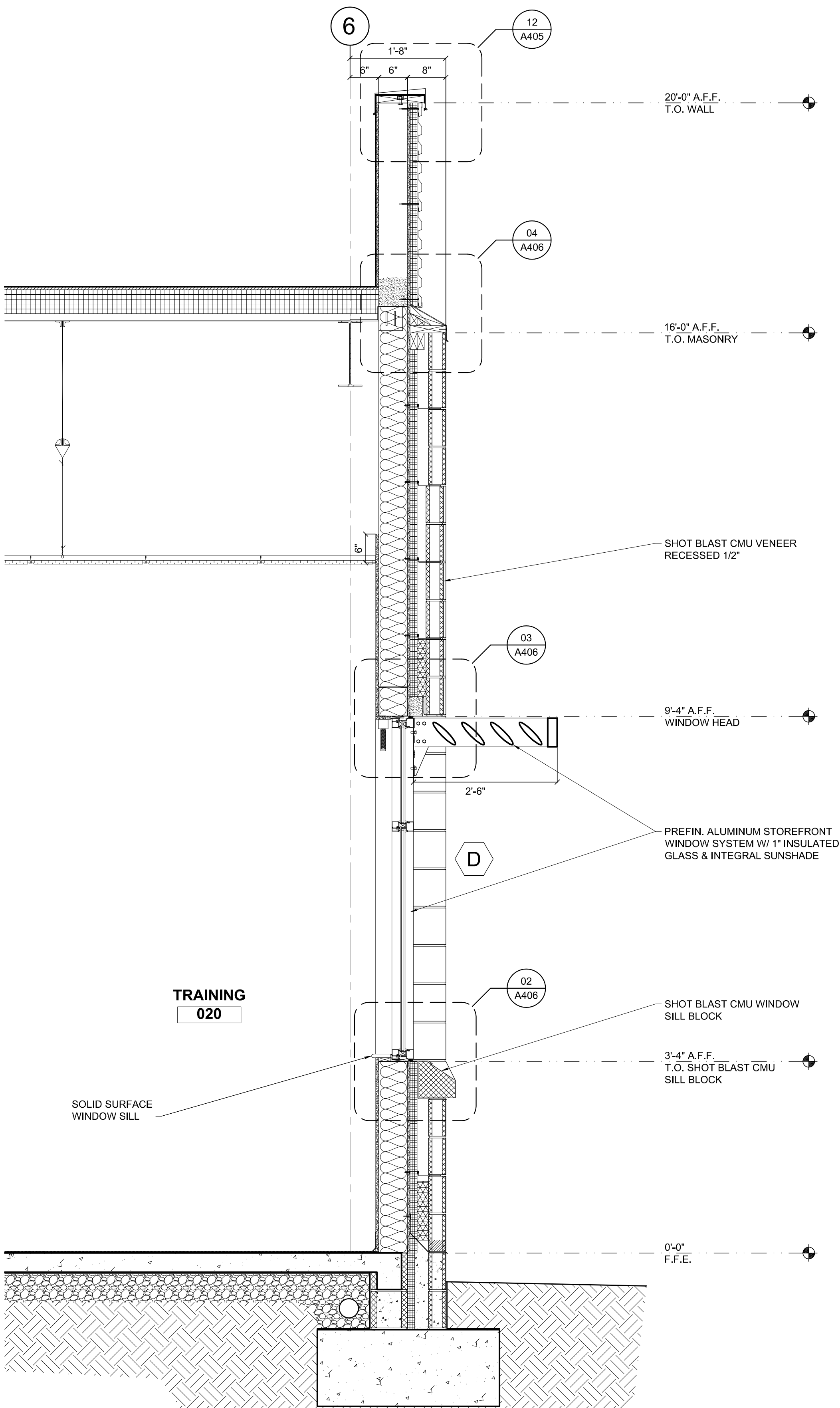
DATE	12.04.2020	
PROJECT NO	20003	
REVISIONS		
NUM.	DATE	DESCRIPTION:
REV1	12/17/20	REVISION 01

THIS DRAWING IS THE PROPERTY OF ADW ARCHITECTS, P.A. AND SHALL NOT BE REPRODUCED OR COPIED IN WHOLE OR IN PART. IT SHALL NOT BE USED ON ANY OTHER PROJECT OR GIVEN TO ANY OTHER COMPANY OR AGENCY WITHOUT THE CONSENT OF ADW ARCHITECTS, P.A.



SHEET NUMBER

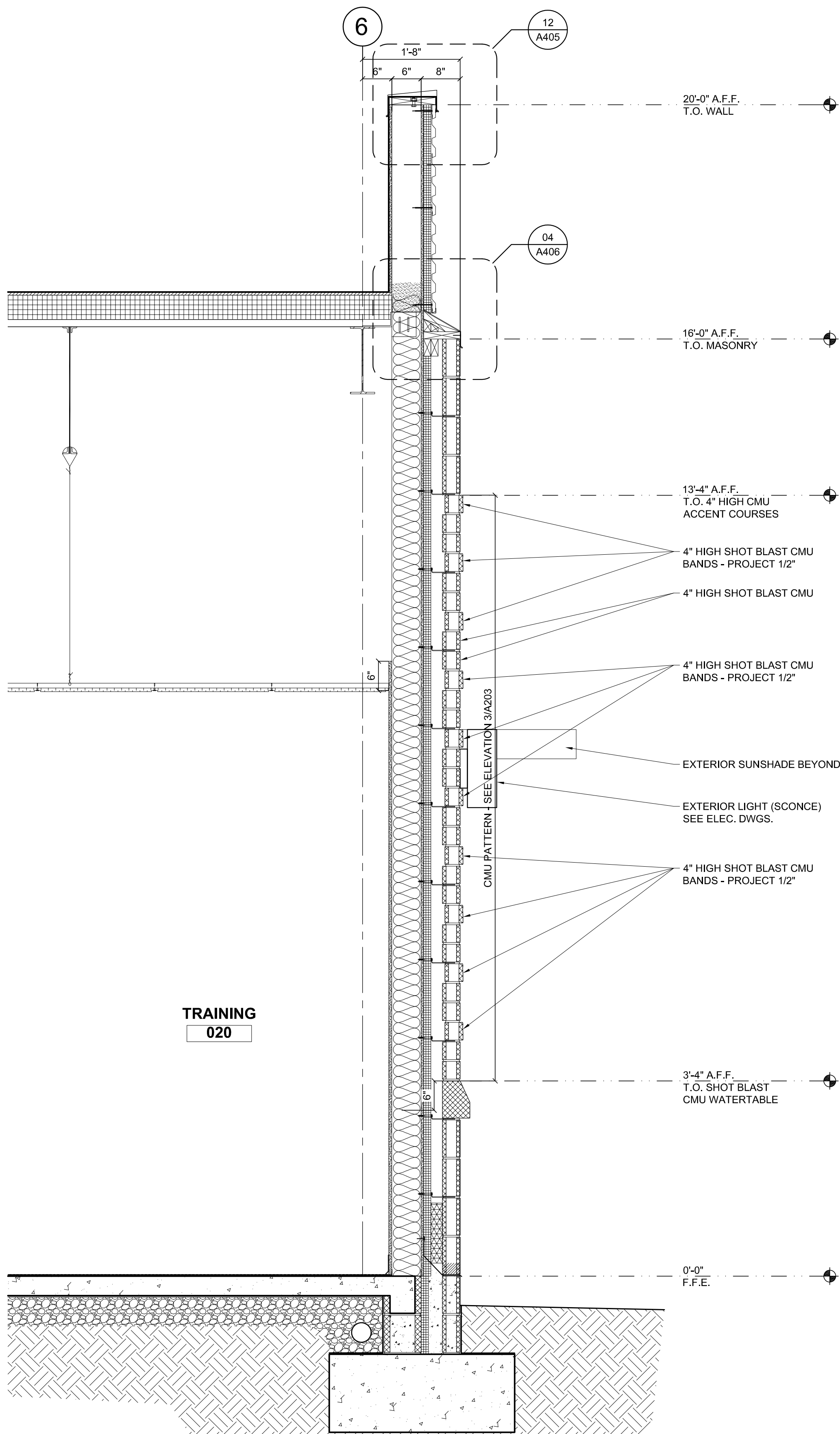
A404



SEE PREVIOUS SECTIONS FOR
BALANCE OF TYPICAL INFORMATION

REV 1 GENERAL NOTE COORDINATION

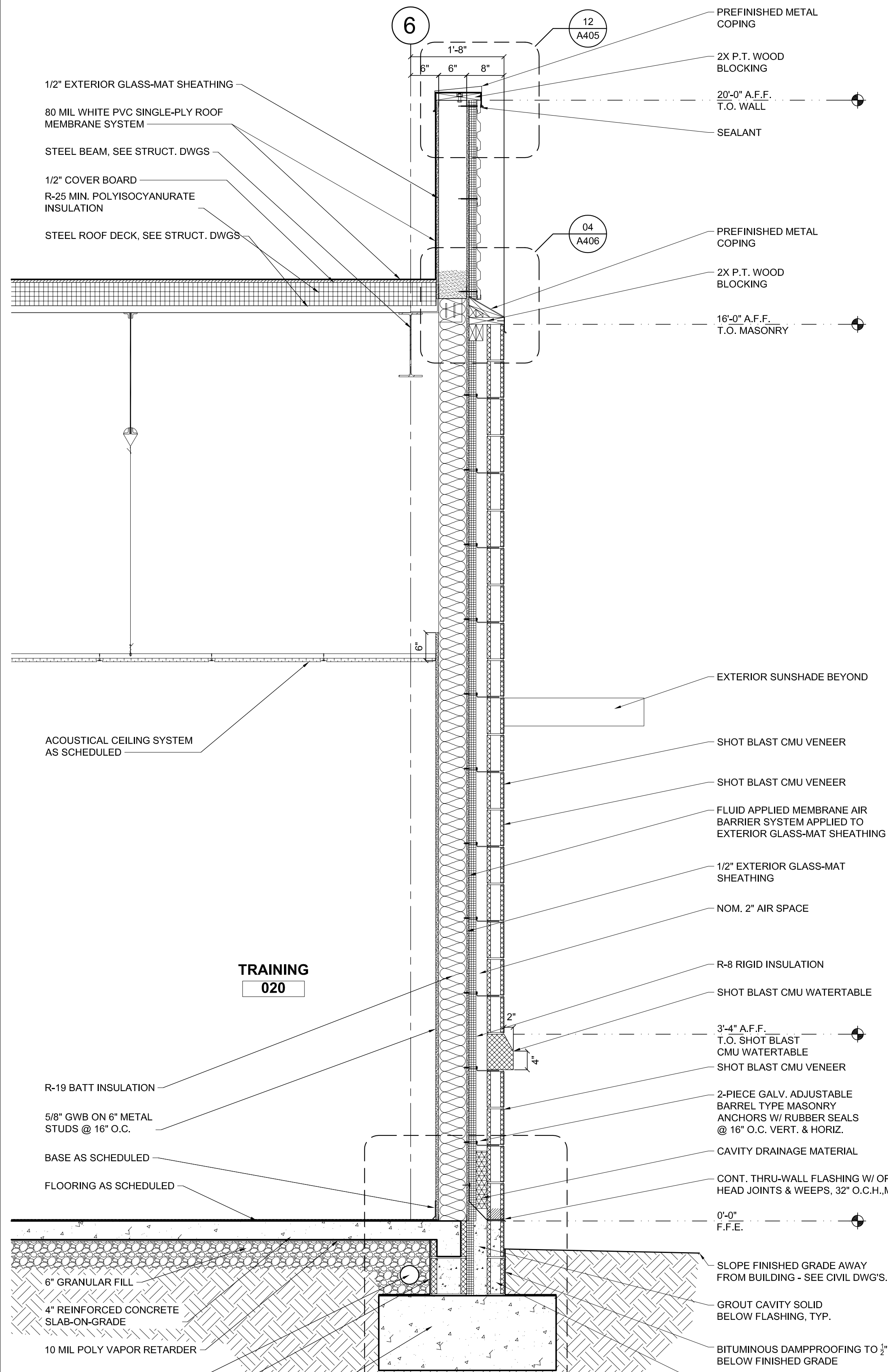
WALL SECTION SCALE: 3/4" = 1'-0" 03



SEE PREVIOUS SECTIONS FOR
BALANCE OF TYPICAL INFORMATION

REV 1 GENERAL NOTE COORDINATION

WALL SECTION SCALE: 3/4" = 1'-0" 02



SEE PREVIOUS SECTIONS FOR
BALANCE OF TYPICAL INFORMATION

REV 1 GENERAL NOTE COORDINATION

WALL SECTION SCALE: 3/4" = 1'-0" 01